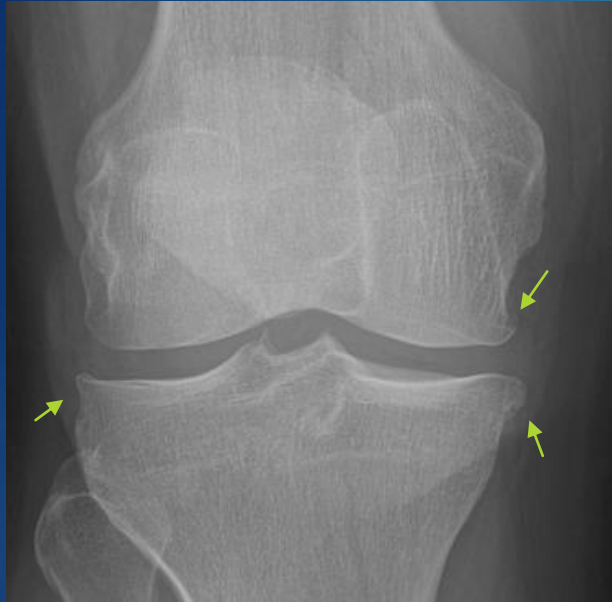


# Osteoarthritis Care Pathway: X-ray Grading

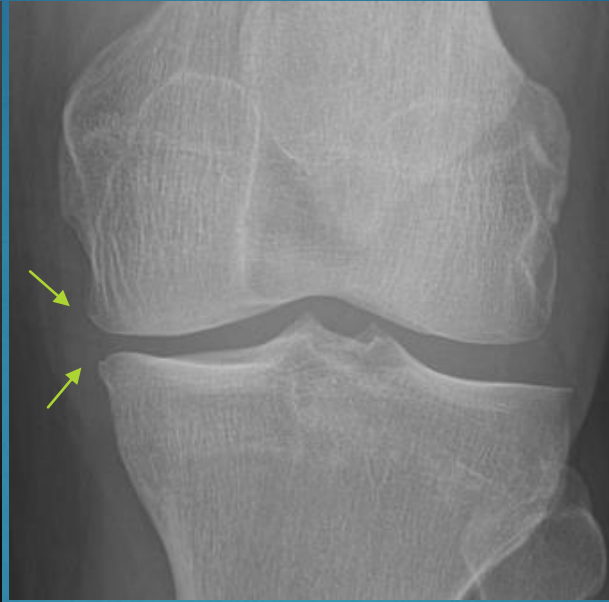
## Mild OA-

spurs, subchondral sclerosis or cysts, without significant joint space narrowing



## Moderate OA-

more spurs, moderate joint space narrowing (<70%)



## Severe OA-

near or bone on bone appearance on any view



### Additional information:

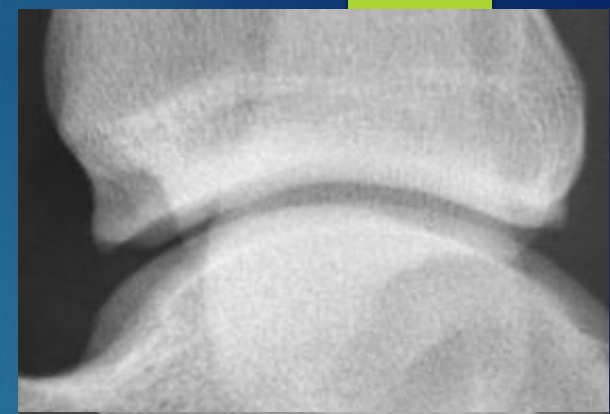
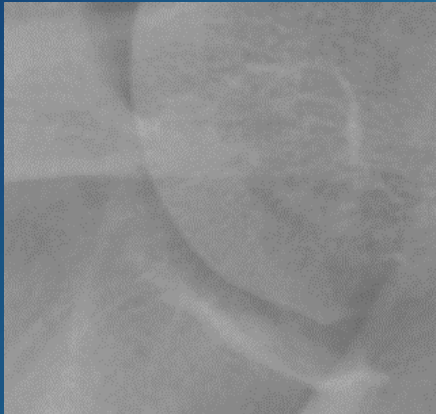
- Please apply this schema to large joints.
- The specific grade of OA has downstream care implications. Please select only one grade for each compartment (do not use “mild to moderate” or “moderate to severe.”)
- Age may be considered for exams that seem to cross two categories (some may opt to slightly undercall in young and slightly overcall in older patients).
- Please first note the most severe compartment. If there are other compartments that are much less

degenerated, then please also indicate such in the radiology report.

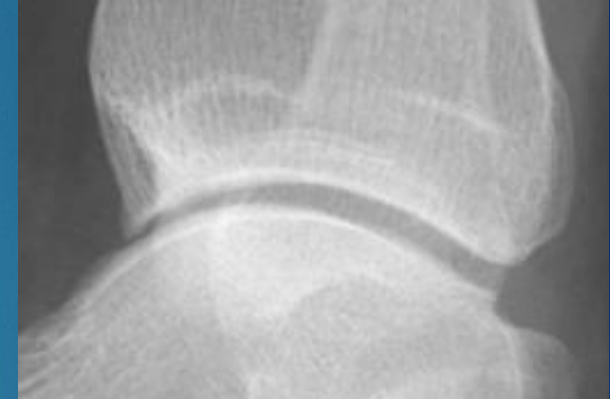
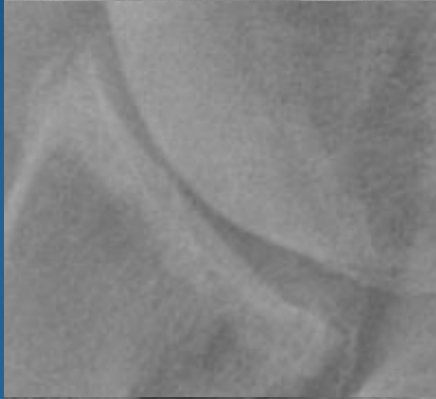
- It is not required to explain the findings that led you to the selected grade of OA.
- For patients with moderate or severe OA and changes suggesting FAI, please just describe the OA rather than FAI.
- Note that AVN can result in severe OA, and that in those cases it could be confusing to discuss AVN, which is unlikely to change management of that joint (needs replacement).

# Osteoarthritis in other large joints

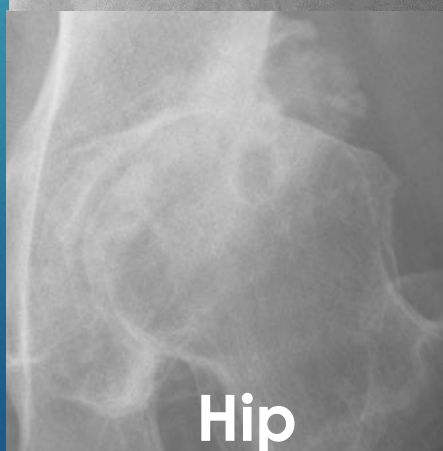
Mild



Moderate



Severe



Shoulder

Hip

Ankle